

ICF REXwall – Jolly Panel

The ICF REXwall system consists of a complete set of permanent formworks in Expanded Polystyrene (EPS). The panels can be easily assembled directly on the construction site using special spacers made of recycled plastic materials; the formworks can be customized accordingly to the structural needs of every specific project. The panels are assembled together in a reversible way, in order to reduce the installation time and the amount of waste created during the process. The spacers are created to strategically optimize the installation and the interlocking of the horizontal reinforcing bars, and to facilitate the subsequent insertion of the vertical reinforcing bars. During the installation process all the spacers are mechanically joined to the EPS panels in order to eliminate the chance that formworks accidentally lift up during the casting process. The internal surface with dovetail vertical sections is created for a perfect settling of the concrete. The external surface has vertical grooves and its particular full-height honeycomb pattern guarantees the adhesion of the plaster layer on its surface. The writing "ICF REXwall" highlights the 2,5 cm vertical support bar.

CHARACTERISTICS OF THE PRODUCT

RC thickness: 15, 17.5, 20, 22.5, 25 cm.

Possibility to add particular elements to create 90° angles, specific for creating every type of out-of-square angles.

Possibility to have horizontal and vertical closings.

To be used for the creation of concrete walls with the thermal-insulating layer adhering to the structure itself.

PRODUCT PERFORMANCES

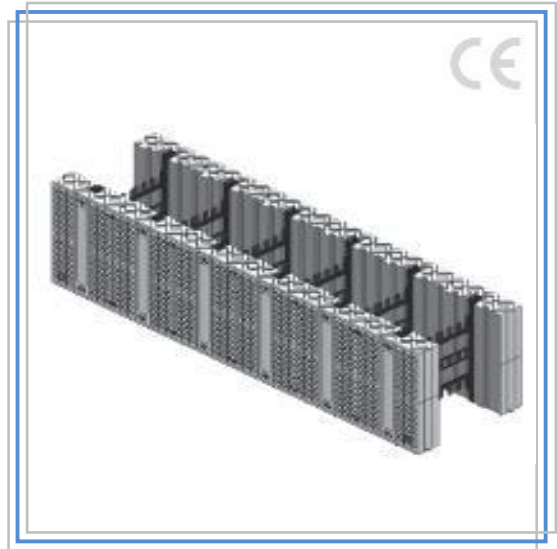
Formulas for the calculation of the thermal transmittance (K) and of heat resistance (R) are:

$$K (W/m^2 K) = \lambda (W/m K) / \text{thickness (m)}$$

$$R (m^2 K/W) = \text{thickness (m)} / \lambda (W/m K)$$

CERTIFICATIONS

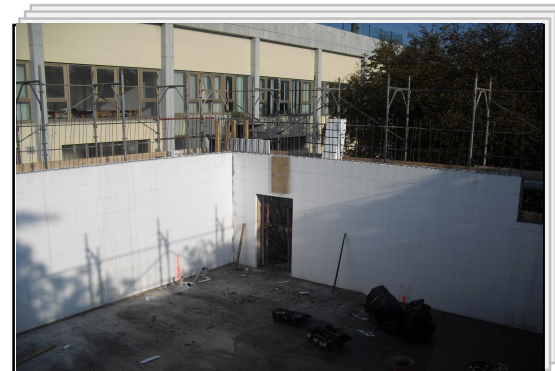
quality management system
with **UNI EN ISO 9001** certification
CE certified EPS



Declared thermal conductivity (UNI EN 13163:2003)
EPS 150 $\lambda = 0,033$

SPECIFICATIONS

High-density, Expanded Sintered Polystyrene (EPS) panels, auto-extinguishing in "E" Euroclass
Size: 120x35x7/10/14/18 cm. In the internal side there are 6 ABS tracks in which to accommodate the spacers, with thermal conductivity $\lambda = 0,033$ W/mK, model ICF REXwall by Rexpol.



Via Enrico Fermi
30036 Santa Maria di Sala
Venezia
Tel. +39 041 486822
Fax +39 041 486907
vendite@rexpogroup.it